

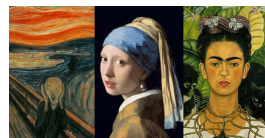
# KNOWLEDGE ORGANISER

## Year 13 Fine Art Semester 1: Personal Investigation

### Fine Art Overview:

Students should be able to explore, research and acquire techniques and develop their skills, knowledge and understanding in a range of Fine Art media.

- Students should explore relevant images, artefacts and resources relating to Fine Art. Students may use traditional methods and/or digital techniques to produce Fine Art work.
- Students in Fine Art are expected to demonstrate specialisation in particular materials, media or processes to allow for an appropriate depth of study. This can be achieved by working toward the extension and development of particular themes, ideas or issues.
- Drawing skills should be understood and developed as appropriate to the ways of recording and communicating intentions, ideas and emotions in the context of Fine Art.



### Related Study:

Students are required to establish through this written and, where appropriate, illustrated component, the related context in which their chosen practical portfolio exists. This may be established by exploring the genre, subject matter, movement or historical framework of the overarching starting point, course of study or theme selected. The aim of the related study is to enable learners to develop their ability to communicate their knowledge and understanding of art historical movements, genres, practitioners and artworks, considering the way that these change and evolve within chronological and other frameworks. It also builds their understanding of the relationship between society and art: art historical terms, concepts and issues; methods of researching, investigating and analysing; and how works are interpreted and evaluated. The related study should be separate and clearly identifiable from the contextual research embedded in the development of the practical portfolio. Students should also highlight their own work and clearly distinguish it from collected or transposed material. Students may produce the related study in an appropriate form of which the following are some examples: an illustrated essay, digital presentation/ blog, illustrated study sheets or written report. It is a requirement of the related study that all source material and research are listed and acknowledged in a bibliography and should be clearly identifiable in the work presented for assessment.

### Great websites for Art students:

[www.plymptonacademyart.tumblr.com](http://www.plymptonacademyart.tumblr.com)

[www.studentartguide.com](http://www.studentartguide.com)

[www.art2day.com](http://www.art2day.com)

[www.thisiscoossal.com](http://www.thisiscoossal.com)

[www.juxtapoz.com](http://www.juxtapoz.com)

[www.itsnicethat.com](http://www.itsnicethat.com)

[www.hifructose.com](http://www.hifructose.com)

[www.thejealouscurator.com](http://www.thejealouscurator.com)



### Assessment Objectives:

**AO1: Develop ideas through sustained and focused investigations informed by contextual and other sources, demonstrating analytical and critical understanding.**

**AO2: Explore and select appropriate resources, media, materials, techniques and processes, reviewing and refining ideas as work develops.**

**AO3: Record ideas, observations and insights relevant to intentions, reflecting critically on work and progress.**

**AO4: Present a personal and meaningful response that realises intentions and, where appropriate, makes connections between visual and other elements.**