

DISCOVER YOUR
FUTURE
WITH PLYMPTON ACADEMY



6TH
FORM
@PA



20
23

Welcome

Lisa Boorman, Principal.

Thank you for the interest you are showing in the Sixth Form here at Plympton Academy. I am very proud of our Sixth Form, and the committed team who support and guide our Sixth Form students. I am pleased that this was recognised in our most recent Ofsted inspection (2020), which reported that:

“Students in the sixth form...feel well supported by staff when making plans for the future.”

They are joined by students from other schools and colleges making up a thriving and exciting Sixth Form of approximately 150 students.

Our vision is to help all of our Sixth Form pupils ‘Discover their Future’. We do this through teaching which is characterised by challenge and expectation, and fostered through personalised careers support, and a wider curriculum which builds a thirst for challenge.

“The best teaching is characterised by a high level of challenge and expectation....”

Current Students Ashe Congdon and Ellie Cornish, Studying Fine Art



We offer a wide range of courses, both A level and Level 3 BTECs. We believe every student will succeed when studying an appropriate course, supported by an experienced tutor and monitoring system, and receiving the highest quality teaching. We believe in inspiring a culture of success for all which is why we set high expectations of every member of our learning community.

I hope this prospectus gives you an overview of the world of opportunity ahead and that you will want to find out more about what we have to offer. I really want you to enjoy your time with us, develop real skills and gain the experience that will act as a strong foundation for your future success.

Lisa Boorman - Principal

About Us

Whether you are currently studying at Plympton Academy or are a student at another school or college, deciding where you should undertake the next stage of your learning will play a key part in determining your future success.

We are dedicated to ensuring that, once they leave our Sixth Form, all students will have acquired the necessary qualifications, experiences and skills to confidently progress to their chosen next steps.

As such we are delighted to have the development of new facilities at Plympton Academy which will raise the aspirations and opportunities for our Sixth Form students; our recently completed 3G pitch and redeveloped MUGA area, along with a state of the art Performing Arts Centre, recently opened by Sir Michael Morpurgo.

Having recently opened our new build, we now have additional state of the art facilities including a new library, sports studio, catering rooms, photography suite, and art rooms.

“We are definitely given more independence in the Sixth Form compared to Year 11, but this means that we have to be more organised. We are never just left to it, though - there is always support at hand.”

Current Student Ismaael Ali, Studying A Level Chemistry



We are very proud of the positive contribution our Sixth Formers make to the ethos of our Academy and the influence they have over younger students. It is crucial that the Sixth Form showcases the very best of Plympton Academy through our Five Core Principles:

Teaching and Learning:

We support our Sixth Formers to love the challenge of learning and be resilient to failure

Leadership:

Leaders inspire a culture of success for all; we look to develop and recognise leadership qualities in all our Sixth Form students through formal and informal opportunities

Community:

The Sixth Form is the cornerstone of a thriving learning community and wider local community. We encourage Sixth Formers to utilise their skills and experiences for the benefit of these communities

Learning Environment:

Through the new facilities, we will create a learning environment for Sixth Formers that stimulates, fosters innovation and promotes opportunities

The Person:

Ultimately, our aim is to equip all students to achieve their dreams and take pride in their success

Studying at Plympton Academy

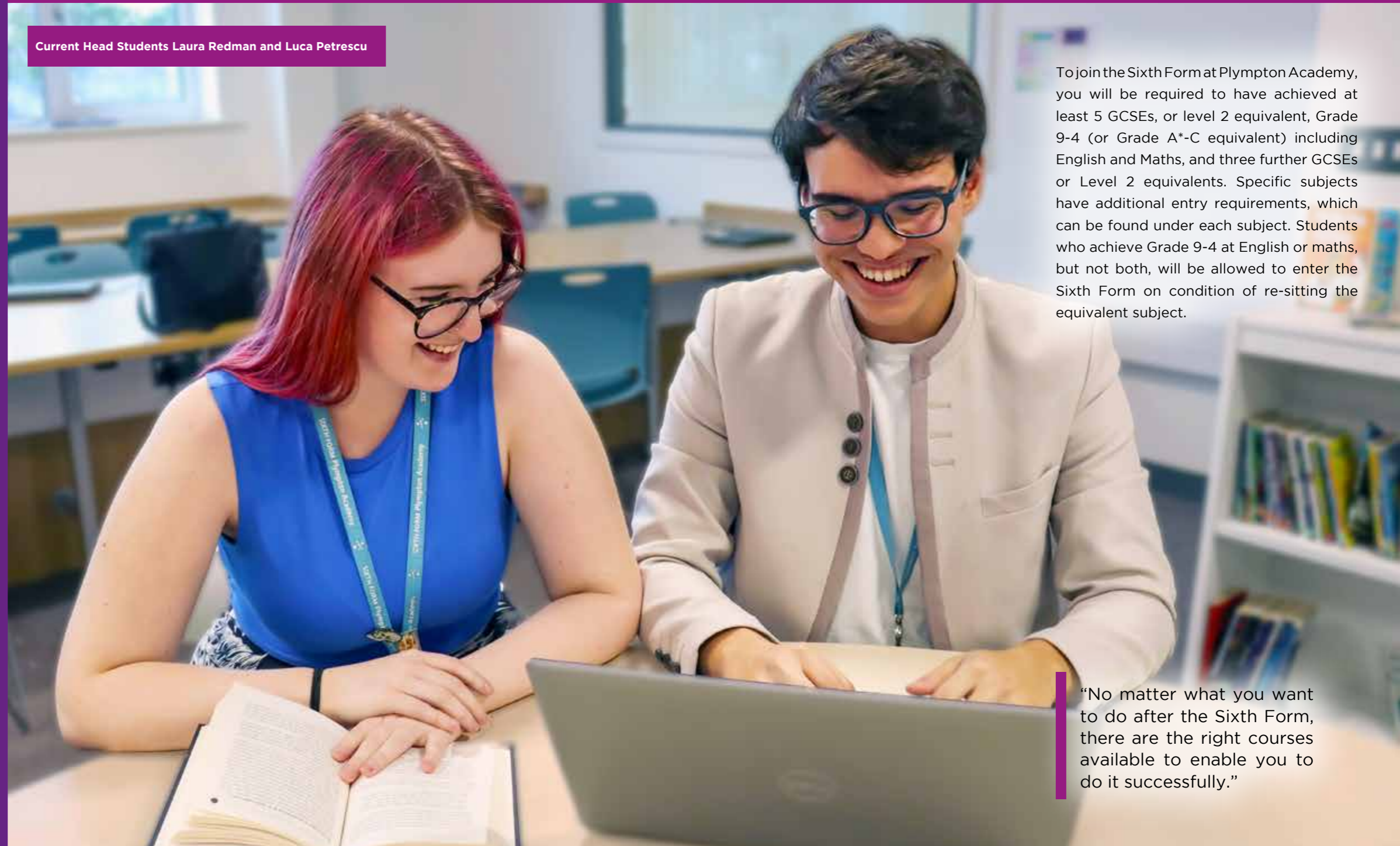
There are many pathways through Sixth Form education at Plympton Academy, all of which provide a wide range of choice, opportunity and access to any career or university course.

Generally students will choose a programme of A Level and/or Level 3 BTECs with opportunities to complete the Extended Project Qualification (EPQ). We look to ensure an individualised programme, dependent on the student's likely GCSE grades and their career or Higher Education aspirations. In addition to the academic provision, students are supported with a tutor programme, including careers, community and charity work and life skills. Students are expected to undertake Work Experience in Year 12 to enhance their application to University or future jobs.

Programmes may include additional courses such as GCSE English and maths re-sits, and opportunities to get involved in enrichment activities.

Students with us can discover life changing outcomes which are nationally competitive.

Current Head Students Laura Redman and Luca Petrescu



To join the Sixth Form at Plympton Academy, you will be required to have achieved at least 5 GCSEs, or level 2 equivalent, Grade 9-4 (or Grade A*-C equivalent) including English and Maths, and three further GCSEs or Level 2 equivalents. Specific subjects have additional entry requirements, which can be found under each subject. Students who achieve Grade 9-4 at English or maths, but not both, will be allowed to enter the Sixth Form on condition of re-sitting the equivalent subject.

“No matter what you want to do after the Sixth Form, there are the right courses available to enable you to do it successfully.”

Guidance and Support

Life in the Sixth Form is different from Year 11. Not only do we give our Sixth Form students their own space and identity, we expect them to take on a sense of independence, and take responsibility for their own success. We recognise, however, that whilst we encourage a greater sense of independence and responsibility, some students still require ongoing guidance to remain on track. Every student's welfare and progress is carefully monitored by subject teachers, their tutor (who they will meet with daily), mentors, and Head of Sixth Form. Appropriate support is provided when such a need is identified or requested.

As well as meeting the academic challenges, Sixth Form is a time for new experiences, and making new friends. In our friendly, adult environment, every student is supported to be the very best they can be.

Discover student centred support through a pastoral programme which is designed to facilitate their future interests.

Financial Support

At the time of writing, full details of the 16-19 Bursary Fund have not been received in the Academy. However, the fund is likely to have two elements:

- Young people: in care or leaving care; in receipt of Income Support or Universal Credit; in receipt of Employment Support Allowance and Disability Support Allowance; or in receipt of Personal Independence Payments will be eligible to receive a conditional bursary of £1,200 a year, payable in weekly instalments
- The Academy also makes discretionary awards to students who are in financial difficulty. If students feel that they are in such a situation (eligibility for Free School Meals is a good indicator) they should collect full details from the Sixth Form Office.



Careers Advice & Guidance

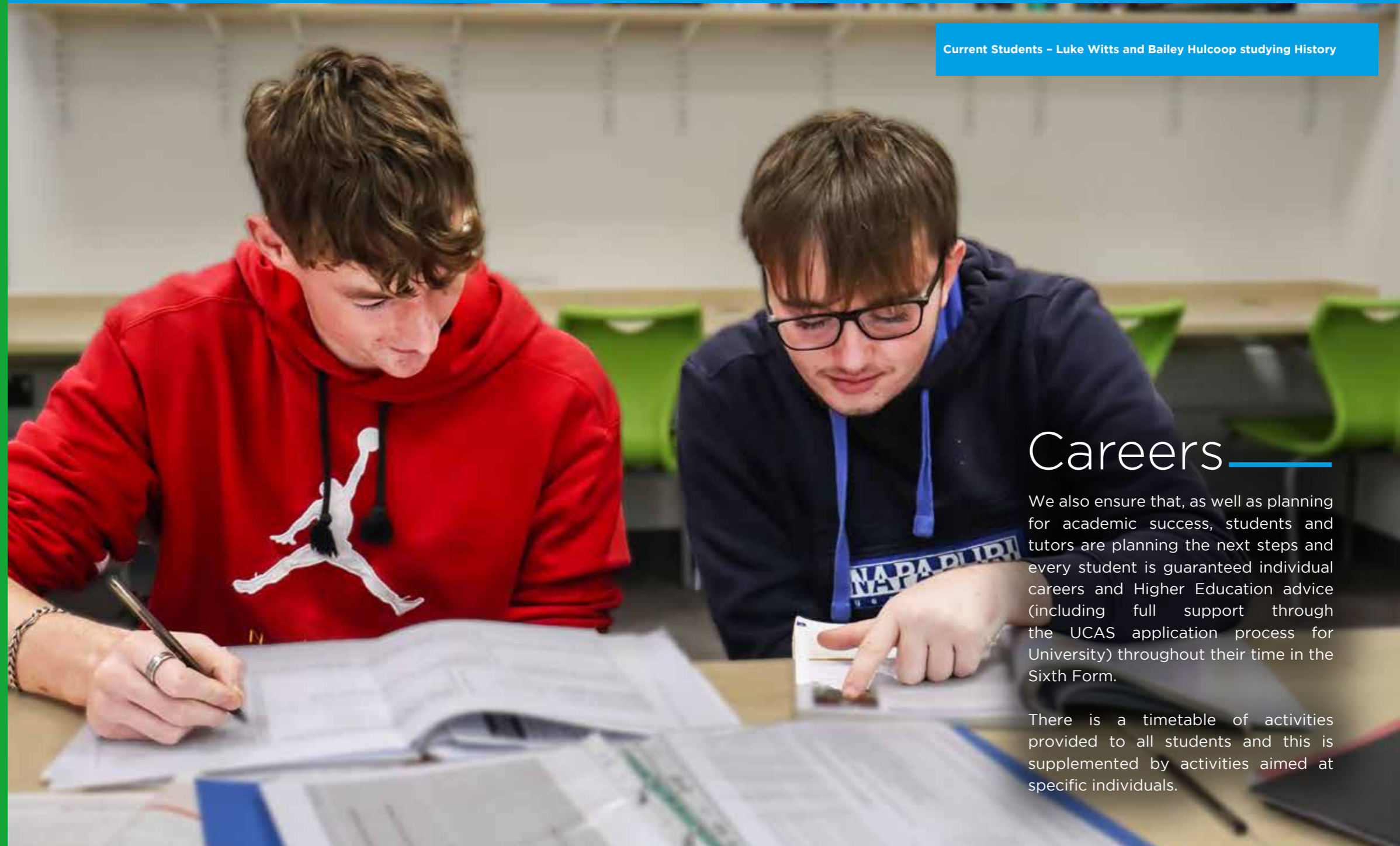
Careers information is at the heart of what we do at Plympton Academy Sixth Form. Students in both Year 12 and Year 13 benefit from an extensive, bespoke careers programme. Year 12s spend time focusing on career pathways, preparing for work with support in creative C.Vs and covering letters as well as support in securing purposeful and relevant Work Experience. Year 13s benefit from tailored pathways information, which includes a separate programme for students looking to study at Oxford or Cambridge as well as the medics.

Both year groups have the opportunity to attend Post 18 pathways events with guest speakers from universities, apprenticeship providers and the military.

Through this robust programme we are able to provide careers advice and guidance to suit the individual.

Discover world class destinations including Russell Group Universities, Conservatoires, Higher Level Apprenticeships, Health and Dentistry and the Military.

Current Students - Luke Witts and Bailey Hulcoop studying History



Careers

We also ensure that, as well as planning for academic success, students and tutors are planning the next steps and every student is guaranteed individual careers and Higher Education advice (including full support through the UCAS application process for University) throughout their time in the Sixth Form.

There is a timetable of activities provided to all students and this is supplemented by activities aimed at specific individuals.

Enrichment Opportunities

There are over 70 enrichment opportunities available throughout the week at the Academy, including performing art, the school performance, music clubs, mindfulness, maths challenge, science clubs, and careers talks. The main out of school enrichment opportunities available to Sixth Form students are:

National Citizen Service

This is your chance to embark on exhilarating challenges, make your mark and build skills for work and life. There are three parts to this scheme:

- Adventure - this is a residential where you'll get to know some amazing people and enjoy some quality time away from home;
- Discovery - you'll be reunited with your group in a uni-style environment where you'll develop life skills like confidence, leadership and communication.
- Social Action - is where your experience comes together to deliver your very own social action project.

Sport

Those who study at Plympton Academy enjoy the opportunity to engage in a range of competitive and lifestyle activities that are on offer through curricular and extra-curricular programmes. Students regularly visit our state-of-the-art Fitness Suite to develop their own health and well-being and many students also represent the Academy in a variety of sporting events. The Sports Leadership programme provides further opportunities for experiences and qualifications for those who have an interest in leadership by leading/assisting with Academy and local community clubs and events.

Student Leadership

Our Sixth Formers are the cornerstone to our student council; they direct the other year groups and act as ambassadors for positive change. Student have the opportunity to participate in leadership through roles such as Head Student, Head of Diversity, Head of Communication or Head of Charity. We also have heads of each of our Houses. Through such avenues the Sixth Form work directly with the community, the staff and the school management team to instigate positive change.

Wider Curriculum

We believe that each student should have the opportunity to develop transferable skills required in the workplace. As such, we make use of tutor time for students to pick wider curriculum activities which promote teamwork, communication and a sense of community. Students have the chance to act as mentors to younger students, become charity ambassadors or even support the community by arranging cross-generation events.

Qualification	A Level	Btec / Level 3
Applied Science		•
Biology	•	
Business Studies		•
Chemistry	•	
Computer Science	•	
Criminology		•
Dance		•
Engineering		•
English Literature	•	
Extended Project Qualification	•	
Fine Art	•	
Further Mathematics	•	
Geography	•	
Health & Social Care		•
History	•	
Mathematics	•	
Music Performance		•
Music Technology		•
Performing Arts		•
Physics	•	
Philosophy & Ethics	•	
Photography	•	
Psychology	•	
Sociology	•	
Spanish	•	
Sport		•

Courses on offer at Plympton Academy

Additional Qualifications

In addition to studying three A Levels, students can also choose to study an extended project

Extended Project / WJEC

Minimum Course Requirements

Standard requirements as stated under Studying at Plympton Academy and a sense of adventure and a passion for research.

An opportunity for you to explore an area that you are passionate about. Over the two years you will complete paperwork in support of a dissertation in any area you choose.

This enables you to focus a research topic around an interest of your own choosing. The course enriches every other subject that you undertake by helping you to develop your research skills. It also provides you with the skills needed for higher education, specifically research skills, time management and organisation techniques. An Extended Project is especially welcomed by universities and has the equivalent UCAS points to a 0.5 A Level.

All course details are correct at the time of going to print but may be subject to change before final entry offers as they are reliant on current Academy staffing expertise

Courses on Offer - A Levels

English Literature / AQA

Minimum Course Requirements

Grade 6 GCSE English Literature or English Language

An exciting and engaging course which will allow you to explore the best of Literature from a new perspective. You will read a range of texts - including prose, poetry and drama - and develop a number of skills, including the ability to: read critically; analyse; evaluate texts; and undertake independent research.

Pathways

Any career that involves communication, for example: advertising and marketing; journalism; law; business, teaching; or authorship.

Mathematics / OCR (MEI)

Minimum Course Requirements

Grade 6 in GCSE Mathematics

A challenging and rewarding qualification which extends and deepens your understanding of Mathematics. As well as learning new areas of pure mathematics you will study further applications of mathematics in mechanics and statistics.

Pathways

There is currently a high demand for mathematicians across a range of sectors including: petroleum and nuclear industries; medicine; IT; engineering; pharmaceuticals; finance, banking and accountancy; and research.

Further Mathematics / OCR (MEI)

Minimum Course Requirements

Grade 7 in GCSE Maths

Further Mathematics is only accessible to students studying A Level Mathematics. It will further your understanding of Mathematics and enable you to study new areas that will not be covered by the Mathematics course. It can be studied as an A/S Level in Year 13 when selected from the Year 12 timetable blocks alongside A Level Mathematics.

Pathways

Topics studied such as matrices and complex numbers will help with the study of degrees such as Engineering; Sciences; Finance/Economics; Computing; and Mathematics.

Biology A / OCR (H420)

Minimum Course Requirements

Grade 6 in GCSE Biology or Grade 6-6 in Combined Science, Grade 6 in Maths, Grade 6 in English

Studying Biology is the foundation to understanding the characteristics of all life on Earth from understanding the human body (including the functions of organs and the effects of diseases); the functions of animals including marine animals; and the creation and preservation of ecosystems including environmental factors. It paves the way for inventions and discoveries that improve the quality of life for all.

Pathways

Biology is a key subject for many STEM careers including: medicine; nursing; dentistry; forensic science; psychology; physiotherapy; veterinary nurse; botany; zoology; geology; oceanography; pharmaceuticals; energy; genetics; and research.

Chemistry A OCR (H432)

Minimum Course Requirements

Grade 6 in GCSE Chemistry or Grade 6-6 in Combined Science and Grade 6 in GCSE Maths

Chemistry is at the heart of so many processes in the modern world. As well as gaining scientific knowledge and practical skills, you will learn to: collect and analyse data; write scientific reports; think logically to solve complex problems; and absorb detail. It is also the only science essential to studying Medicine.

Pathways

As a global subject, there are many opportunities to travel and work abroad as well as in the UK. It is also recommended when following routes such as: Medicine; Biochemistry; Chemical Science; Engineering; Geography; Environmental Sciences; Materials Science; Physiotherapy; Nursing; Sports Science; Psychology; zoology and Veterinary Science.

Physics / OCR (A) H556

Minimum Course Requirements

Grade 6 in GCSE Physics or Grade 6-6 in Combined Science, Grade 6 in GCSE Maths

You will learn skills that enable you to analyse the physical world around you and predict how objects will move, how materials behave; how light can be understood and how electricity can be harnessed. Expect to be challenged in your thinking and excited by the way the universe works.

Pathways

As well leading to further study in areas such as Maths, Engineering, Science and Medicine, Physics is also a pathway into the following industries: space; technology; electronics; communications; television, radio and digital media; research and exploration; and computing. The skills you develop are sought after by many major employers, from the technology sector to financial services.

History / AQA (7402)

Minimum Course Requirements

Grade 6 in GCSE History or 6 in GCSE English

You will have the chance to explore iconic periods in History through research, analysis and debate. You will consider the challenges to the Tudor dynasty and the turbulence of the changes made by successive monarchs. You will also assess the nature of the 'American Dream' by looking at the roles of post-war presidents in areas like Civil Rights, Foreign Relations and their actions during the Cold War. Through considering debates such as America's role in Vietnam and the impact of individuals like Martin Luther King you will develop both analytical and evaluative skills. Furthermore, you will have the opportunity to fully research and investigate a chosen topic in History during the coursework unit.

Pathways

Helps to open doors to careers which require you to think beyond what is given, read between the lines and understand differing viewpoints and form an argument. Such careers include law; politics; journalism; academia; research; business management; public relations and media; and archaeology.

Core Maths

Minimum Course Requirements

Grade 4 at Mathematics GCSE

Core Maths is a qualification that enables you to continue to keep your mathematical skills sharp and widen your knowledge of the subject when you do not have the required grades or desire to take on an A-level in Mathematics. This qualification carries the same UCAS points as an AS qualification and will be completed over two years. It is highly regarded by universities and employers alike, and can be a really useful support to other A-level and BTEC subjects where data analysis, numerical calculations and use of formulae are needed; such as in the sciences, geography and psychology to name a few.

Core maths is especially welcomed by universities and has the equivalent UCAS points to an AS level qualification

Fine Art / AQA

Minimum Course Requirements

Grade 6 in GCSE Art and Design

Fine Art allows you to explore the world around you and respond to it in your own unique way. You will work with a range of media and techniques before focusing on your chosen specialist area. You will research and analyse the work of professional artists, craftspeople and designers and in doing so, improve your own knowledge, skills and understanding. Your 'Personal investigation' will showcase your portfolio of work and a written 'Related Study' will support your art work.

Pathways

The creative industries cover a wide variety of areas including: animation, advertising, computer games, craft, cultural heritage, design, digital media, interactive media, fine art, fashion, film, photo imaging, textiles and TV.

Geography / AQA

Minimum Course Requirements

Grade 5 in GCSE Geography

Through exciting and contemporary topics, you will have the opportunity to learn about the physical world around us and how humans interact with it.

This incredibly diverse course consists of three human and three physical topics:
- Changing Places
- Contemporary Urban Environments
- Global Systems and Global Governance
- Water and Carbon Cycle
- Coastal Environments
- Hazards

Learners will unpick debates surrounding challenges as well as completing an independent project choosing their own research question. Geography helps us understand and make sense of the modern world which is essential for the decision makers of tomorrow.

Pathways

A huge variety of exciting career paths are open to geographers including: climate change analyst, landscape architect, humanitarian programme manager, meteorologist, conservationist, cartographer and surveyor. Geography is a highly respected academic A level and can support with a range of degrees such as Environmental Sciences, Biology, Sociology, Business, Economics and many more.

Computing Science / OCR (H446)

Minimum Course Requirements

Grade 5 in GCSE Maths

Computer Science is an intensely creative subject that combines invention and excitement and allows you to look at the natural world through a digital prism. There is a large focus on computational thinking, helping you to develop the skills to solve problems, design systems and understand the power and limits of human and machine intelligence. You will design and build your own choice of software system, which in the past has included projects ranging from scientific simulations to 2D or 3D games.

Pathways

As computers are such an integral part of the modern workplace, people with computer skills are in extremely high demand across all employment sectors. Computer Science at A Level is valued by Universities and employers since it requires the development of analytical thinking and problem solving skills. It lays an appropriate foundation for further study of Computer Science, Engineering, Physics, Business or related subjects in higher education. The average starting salary for those with a Computer Science degree is around £26,000. The A Level also provides a route to non-graduate jobs such as software engineer, and systems analyst.

Philosophy and Ethics / Eduqas

Minimum Course Requirements

Grade 5 GCSE RS and / or Grade 5 GCSE English

You will explore some of the world's biggest questions, such as: why is there suffering in the world?; are people born evil?; can anyone be truly happy?; do we have a duty to help those in need?; and does science disprove religion? You will also develop analytical, evaluative and investigative skills as you discuss issues such as abortion, animal experimentation, capital punishment, nuclear weapons and religious influences on the world including mindfulness colouring in and the Dalai Lama at Glastonbury! Once again, your opinion matters and you will be using your views in your answers.

Pathways

In recent years students have progressed to study Accountancy, Education, English, Geography, History, Journalism, Law, Maths, Medicine, Midwifery, Philosophy, Photo-Journalism, and Social Policy at University before pursuing careers as lawyers, journalists, doctors, midwives and teachers.

Sociology /AQA

Minimum Course Requirements

Grade 5 in GCSE English

You will critically consider society and the institutions within it. It is an excellent choice for those who are curious about the world and current affairs. You will explore theories explaining why people commit crime, how schools maintain society and how people are oppressed. We also delve into sects and cults as well as subcultures. Topics studied include crime and deviance, beliefs in society, family and education.

Pathways

Sociology is a good foundation for careers in journalism, criminology, politics, social work, teaching and public sector jobs. It complements subjects such as Psychology, English, History, Philosophy and Ethics and Health and Social Care.

Photography / AQA

Minimum Course Requirements

Grade 6 in GCSE Art and Design or GCSE Photography

Photography is a dominant influence in the way that we relate to the world around us. Photography influences television, the internet, film, advertising and journalism. Within the course we explore the wide reaching impact of photography as well as developing our own skills with both the camera and image manipulation.

Pathways

The creative industries cover a wide variety of areas including: photography, animation, advertising, computer games, craft, cultural heritage, design, digital media, interactive media, fine art, fashion, film, image manipulation, textiles and TV.

Courses on Offer - A Levels

* Could be offered as a BTEC or A Level qualification for September 2021 - with further confirmation in the Summer of 2021.

Psychology / AQA *

Minimum Course Requirements

Grade 5 in a GCSE Science component and Grade 5 in GCSE Mathematics or GCSE Statistics

Psychology gives a fascinating insight into the human mind and tries to explain people's behaviour. Have you ever wondered why some people conform and others don't, or why some people suffer from mental health problems? This is your opportunity to find out. Topics studied include schizophrenia, aggression, infant attachment and obedience.

Pathways

Psychology is highly relevant to careers in health, nursing, criminology, counselling, research, management and teaching. It complements subjects such as Biology, Chemistry, Maths, Sociology, English and Health and Social Care.

Spanish / AQA

Minimum Course Requirements

Grade 6 in GCSE Spanish

Not only will you become proficient in the second most spoken language in the world, you will broaden your understanding of the cultures and societies of countries where Spanish is spoken. A Level Spanish improves your fluency and independence in the language and allows you to discuss the big issues in society such as sexism, homophobia, immigration, dictatorships and youth unemployment as well as learn about hispanic singers, artists, traditions and gastronomies. You will also study a piece of Spanish literature and a Spanish film in order to deepen your understanding of the language and culture.

Pathways

Studying a foreign language can improve your chances of attending a Russell Group University; progress to further language studies such as translation or linguistics; work for multinational companies in a range of industries such as law, business finance and commerce, and live and travel confidently abroad as well as appreciating other people's cultures.

Courses on Offer - Level 3 BTECs

Health and Social Care / BTEC NQF Level 3 Extended Certificate

Minimum Course Requirements

Standard requirements as stated under Studying at Plympton Academy

You will develop a range of knowledge, skills and attributes that are essential for the health and care professions through the study of topics such as: the human lifespan; meeting individual care and support needs; working in Health and Social care; and physiological disorders and their care.

Discover what is required to work in the health and social care sector, alongside how to care for individuals with specific needs. Research into causes of physiological and new treatments will help you create a care plan for an assigned service user.

Pathways

Previous students have progressed to further study at university level. Courses include Adult Nursing; Mental Health Nursing, Midwifery and Counselling. Others have pursued careers in teaching, childcare, pediatrics, nutrition and personal training.

Criminology (WJEC Level 3 Applied Diploma)

Minimum Course Requirements

Standard requirements as stated under Studying at Plympton Academy

This combination of taught and applied learning gives students an understanding of the criminal justice system and the tools to apply their learning to real-life crimes. Students should have a passion for watching, reading and learning about crime and the impact it has on society.

Pathways

Primarily designed to support learners progressing to university, the Level 3 Criminology qualification has been designed to provide exciting and interesting experiences that would apply to any sector within the criminal justice system such as: probation, the police, social services and forensic investigation.

Business Studies / Pearson BTEC Level 3 National Extended Certificate

Minimum Course Requirements

Standard requirements as stated under Studying at Plympton Academy

This is a practical course that looks at real life situations and allows you to develop the skills and knowledge required in a modern day business environment. You will study topics such as Marketing, Finance and how departments work together to meet the aims of organisations. You will examine case studies of actual businesses and the problems they encounter.

Pathways

As well as a springboard into further study at University, Business Studies is relevant to employment in a wide range of industries, including retail, finance, HR and marketing.

Engineering / Pearson BTEC Level 3 National Extended Certificate

Minimum Course Requirements

Grade 5 in GCSE Maths

The qualification provides the opportunity to understand manufacturing processes in engineering, as well as the team working and practical skills needed to manufacture a product or deliver engineering services safely. It is designed to help you to become occupationally ready to take up employment in the Engineering sector. The mathematical unit offers the necessary theory that underpins the application to solve a range of engineering problems. You will be required to turn design ideas into viable products through the use of computer aided design programs and machining techniques. This will allow you to use your knowledge of materials, components, and engineering principles to produce effective solutions.

Pathways

The BTEC Level 3 can provide a pathway to: a University Degree or Foundation Degree in an appropriate vocational discipline; BTEC HNCs and HNDs; or to employment via the apprenticeship route.

Applied Science / BTEC Level 3 National Extended Certificate

Minimum Course Requirements

Grade 5-5 in GCSE Combined Science or Grade 554 (in any order) in Triple Science, and grade 5 in GCSE Maths

You will learn to apply and develop your scientific knowledge, skills and techniques to real-life situations. You will develop fundamental scientific skills including research, practical work and problem-solving. There are elements of Biology, Chemistry and Physics in this course.

Pathways

Students have progressed on to a variety of University courses and employment in science-related industries including Paramedical Science, Sports Therapy, Nursing, Midwifery, Biomedical Science, Social and Sports Science, Aeronautical Engineering and Mechanical Engineering.

Sport

BTEC NATIONAL SPORT AT LEVEL 3

At Plympton Academy we offer the opportunity to study the BTEC National Sport through a number of pathways. The Extended Certificate in Sport is equivalent to one A Level and the Diploma in Sport is equivalent to two A Levels.

Each of the pathways offers a number of Units, some of which are mandatory and others that are carefully selected to allow you to progress to your full potential. Some of the topics that are studied are:

- Anatomy and Physiology
- Fitness Training and Programming for Health, Sport and Well-being
- Professional Development in the Sports Industry
- Sports Leadership
- Investigating Business in Sport and Active Leisure
- Acquiring Skill in Sport
- Practical Sports Performance
- Work Experience
- Outdoor Education Activities

Students will also complete additional qualifications relating to Sports Leaders and National Governing Body Awards. Students must enjoy the practical elements of this course as well as being prepared for a considerable amount of theory and work-based experience. These work placements will prepare you for future employment, giving you a first taste of working within the professional industry.

PATHWAYS

These highly successful courses offer fantastic career and academic progression opportunities with past students moving on to either University study or employment.

You will acquire and develop the skills needed for a range of careers in the sports and leisure industry including; PE teacher, sports coach, sports therapy and rehabilitation.

The personal skills that are developed through the course are also suitable for those students who wish to excel in business, the Armed Forces or the service industry where confidence and adaptability are vital.



Current students: Jerrard Lake and Luke Benney studying Sport

Performing Arts

We have a flourishing Performing Arts department that is based in the new state-of-the-art Performing Arts centre. This facility offers students, who choose to study either the BTEC Level 3 qualification in Performing Arts or Music, specialised music classrooms, practice rooms, a fully equipped recording studio, drama studio, professional dance studio and a contemporary performance space with seating for 180 people.

BTEC PERFORMING ARTS

The two year course is for students who have a serious interest in developing a wide range of performance skills in voice, acting and movement.

Over the two years of the course you will undertake a broad range of skills-based and theory-based units which may include: Performing to an Audience: Musical Theatre Performance; Singing Techniques and Performance; Developing and Applying Physical Theatre; Acting Skills; Devising Plays; and Auditions for Actors.

QUALIFICATIONS OFFERED

National Extended Certificate equivalent to 1 A level

The Extended Certificate is for students who are interested in learning about the performing arts sector alongside other fields of study, with a view to progressing to a wide range of higher education courses, not necessarily in the performing arts.

National Diploma equivalent to 2 A levels

The Diploma is designed to be the substantive part of a 16-19 study programme for students who want a strong core of the performing arts, with a view to continuing this area of study at higher education.

Current Student - Carys Macaskill studying Performing Arts and performing in our Academy show of Mary Poppins

“The facilities are brilliant and we learn so many different aspects of performance. I now feel confident to follow my ambition for working in the performing arts industry.”

SPECIFICATION

This is a fantastic opportunity to be able to study the performing arts. A course that allows the student to study large practical base giving a range of skills. Students get to focus on the holistic development of the practical, interpersonal and thinking skills required to be able to succeed in employment and higher education. The course is designed to give an appropriate selection of skills, techniques, concepts, theories and knowledge from across the whole sector of the performing arts. Students get to apply their developing skills in realistic contexts using scenarios and realistic activities. Students will study a range of units covering the following content areas:

- Solo and Group Performance skills
- Developing Skills and Techniques for Live Performance
- Community based Projects

Students will also be able draw their focus into one key area of choosing the following route:

- Acting
- Dance
- Musical Theatre

This course aims to be a vibrant course full of practical work allowing students to get involved in the performing arts. The units are designed to enthuse and excite students about the performing arts and allow every member to reach their potential.

PATHWAYS

Students completing their BTEC Nationals in Performing Arts will be aiming to go on to employment, often via the stepping stone of higher education following a University or performing arts school degree course. Alternatively students may wish to enter into employment to follow an apprenticeship route which could lead to a long term career path.

EXTRA-CURRICULAR AND PERFORMANCE OPPORTUNITIES

Each year the Faculty puts on an ambitious production that utilises all aspects of the state of the art building. We have high expectations of the students and look to our BTEC students to model professionalism and support towards the younger students throughout the process and the end production.



Music

BTEC MUSIC (LEVEL 3 NATIONAL EXTENDED CERTIFICATE) in Music Performance

Are you interested in a career in the music sector and want to improve your technique, musicianship and performance skills? Do you want to study in a stimulating music environment with a variety of professional musicians and practitioners? If so, the Level 3 Extended Certificate in Music Performance is the course for you! This modern and contemporary course is ideally suited to anyone seeking to study higher level music at a specialist contemporary music school and/or university or for those intending to work in a music performance related industry.

MUSIC PERFORMANCE

During the two year course, study will combine both practical and theoretical aspects of the course through the main skill of solo/group performing. This is supported by the development of a range of skills including aural, research of professional practise, improvisation and composition.

Dance

BTEC LEVEL 3 EXTENDED CERTIFICATE IN PERFORMING ART (DANCE)

The two year course is for students who have a serious interest in developing a wide range of technical and performance skills or perhaps want to explore pathways and training into the dance industry. We will cover styles of dance such as Jazz, Hip Hop and Contemporary and look at a range of productions and practitioners.

Students will have the opportunity to create their own work and perform as a group as well. The course is designed to ignite a passion for dance and fuel that with constant opportunities to perform, collaborate and choreograph. It is both an ideal platform for further training towards a professional career in performance as well as a rigorous and creative accompaniment to more traditional Level 3 qualifications.

Josh Pinder - Year 13 in Sixth Form **Mathew Day** - Year 12 student
Former student Baily Burt - studying Popular Music & Songwriting at BIMM Institute.



“Music is one of my favourite subjects because of how it has made me grow in confidence and made me a much better musician. The support you are given in lessons is incredible and whether you are the least confident or the most confident in the room, it doesn't matter because the teachers are always there to provide help in any situation.”

BTEC MUSIC (LEVEL 3 NATIONAL EXTENDED CERTIFICATE) in Music Technology

If your interested in the technological side of music production and working in a music studio then this is the course for you. Learning how to work the sound desk in a live performance as well as in a recording studio. Learning how to manipulate sound through digital media and create compositional outcomes to perform live or prerecorded. The structure of the course allows you to get a breadth of understanding of music technology, equipment and the roles. Sound engineers in the music industry.

MUSIC TECHNOLOGY

This two year course focuses on The Music Industry and live and studio based. Recording Techniques. The main skill of Music Production is supported by a range of skills including listening, research, live sound techniques, sound creation and manipulation. You will complete projects and assignments that are based on realistic workplace situations, activities and demands.

What could this qualification lead to? This qualification will prepare learners for direct employment in the sound engineering sector and is suitable for those wanting to work in entry-level roles such as:

- live music assistant
- assistant sound engineer
- audiovisual technician/broadcast assistant.

PROGRESSION OPPORTUNITIES

This course provides great preparation for a career in the music industry and is designed to enable students to either progress to university or gain useful paid employment. Future career opportunities include Composer, Arranger, Sound Engineer, Studio Manager, Technician, Promoter, Singer/Songwriter, Teacher and PR marketing.

The department offers a large array of extra-curricular opportunities for students studying music from Performance Band, Orchestra, Choir and Jazz group. It is expected that level 3 students are proactive in supporting the department clubs as well as getting involved in working with our primary students and younger students within the academy. Each year the Performing Arts Faculty puts on an ambitious production that utilises all aspects of the state of the art building. We have high expectations of the students and look to our BTEC students to model professionalism and support towards the younger students throughout all the Extra-Curricular activities we offer.

Joining us at Plympton Academy

You have reached an important milestone in your education and it's time to make some life changing decisions about your next steps in learning. If you are interested in joining the Plympton Academy Sixth Form we would like to hear from you.

There are several steps in finding out more about us and making an application:

November 2022 - Careers information and guidance provided through Tutorial Activities.

January 2023 - Deadline for Applications

An application form is included with this prospectus. Later applications may be made but it is advantageous to meet the deadline because interviews are arranged on receipt of an application form and subject groups are formed soon after the interview period.

January 2023 - Sixth Form Interviews

Interviews will be held to give you further guidance. They may also be arranged for later applicants.

Spring Term 2023 - Confirmation of Subject Blocks

August 24th 2023 - GCSE results arrive; members of staff will be in the Academy to help and support you with future pathways.

September 2023 - Courses start, with individual meetings with tutors to receive more help and guidance.

If you would like to find out more please contact our Assistant Principal and Head of Sixth Form

Ms Katie Kerr
Katie.Kerr@plymptonacademy.tsat.uk

We look forward to hearing from you.



Lauren Hampson, Rachel Wren, Ethan Wilshaw and Sarah Lyon
All students who completed the Inspire2Involve project with Cambridge University



ALL FORMER STUDENTS

Anna Laniewski - GAP year and then on to University next year studying Criminology at Leeds University.

Makayla Cook - studying Criminology and Criminal Justice at Plymouth University.

Carrie Irwin - studying BEd in Secondary Physical Education.

Ebony Bell - studying Primary Special Educational Needs with QTS at University of St Mark & St John

Taylor Vockings - studying Health Professionals at Bristol UWE.

Lily Wallers - studying Business and Events Management at Bristol UWE.



We know that every student that applies to join our Sixth Form has worked very hard to get to this point. This being the case, part of the Sixth Form transfer process involves making sure each student is placed on an appropriate pathway that will give them the experience to enter the world of work or continue into further education.

The full list of pathways and programmes of study are detailed in the 'Studying at Plympton Academy' section of this Prospectus. If you decide that you would like to join the Sixth Form here at Plympton Academy, full details of the process and key dates can be found under 'How to Apply'.

If you would like to discuss your application, or have any questions regarding our Sixth Form, please contact the Academy; you will have our full support as you take greater responsibility for your own learning and start to make significant choices in preparation for your chosen path to enrichment and success.

Please see previous page for contact details.

Discover how to unlock your potential @ Plympton Academy

Principal: Ms Lisa Boorman

T: 0333 360 2220

E: enquiries@plympton.academy

W: www.plympton.academy

 @PlymptonAcademy

 plymptonacademy




**Plympton
Academy**
Inspiring Success

Plympton Academy, Moorland Road
Plympton, Plymouth PL7 2RS